

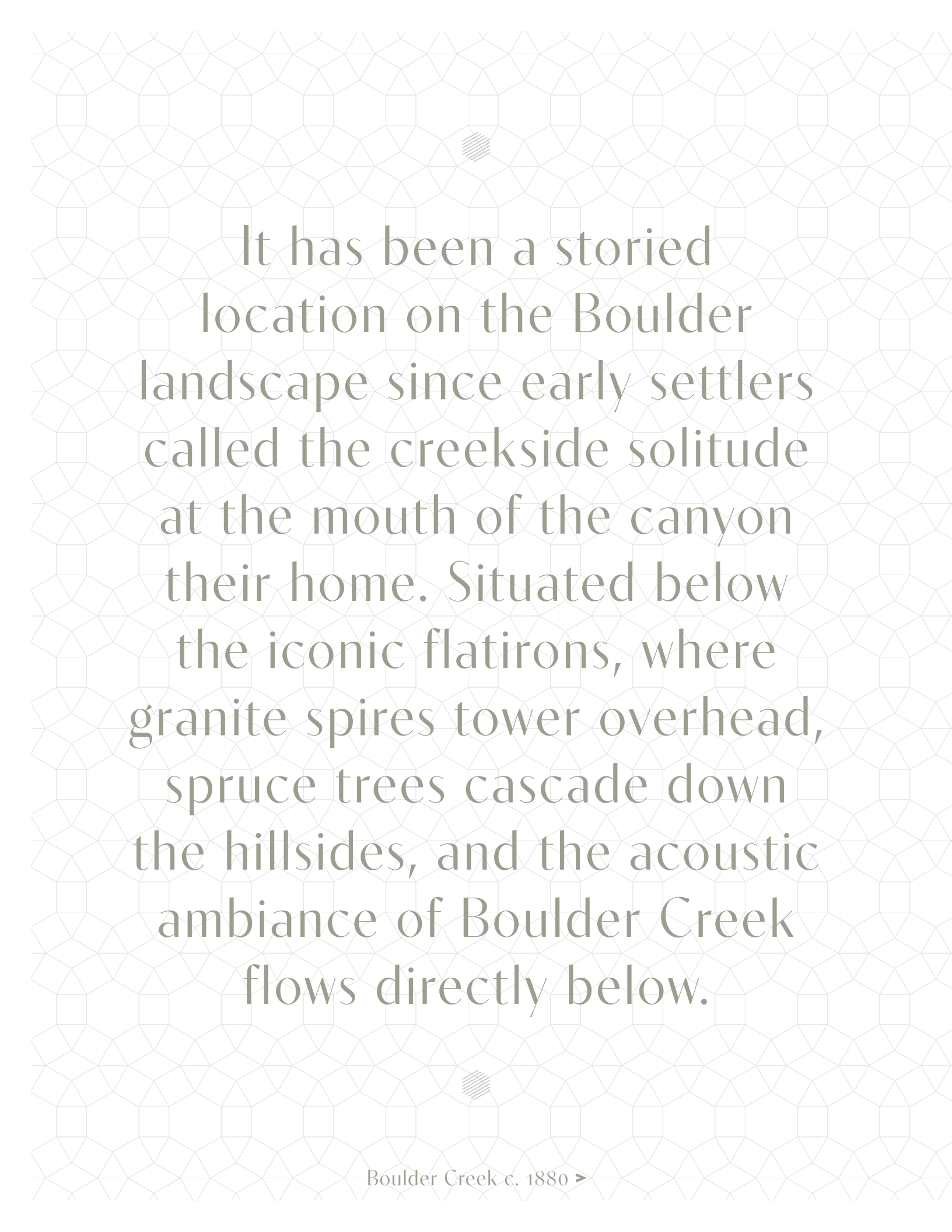


# SADDLE CREEK

BOULDER • COLORADO

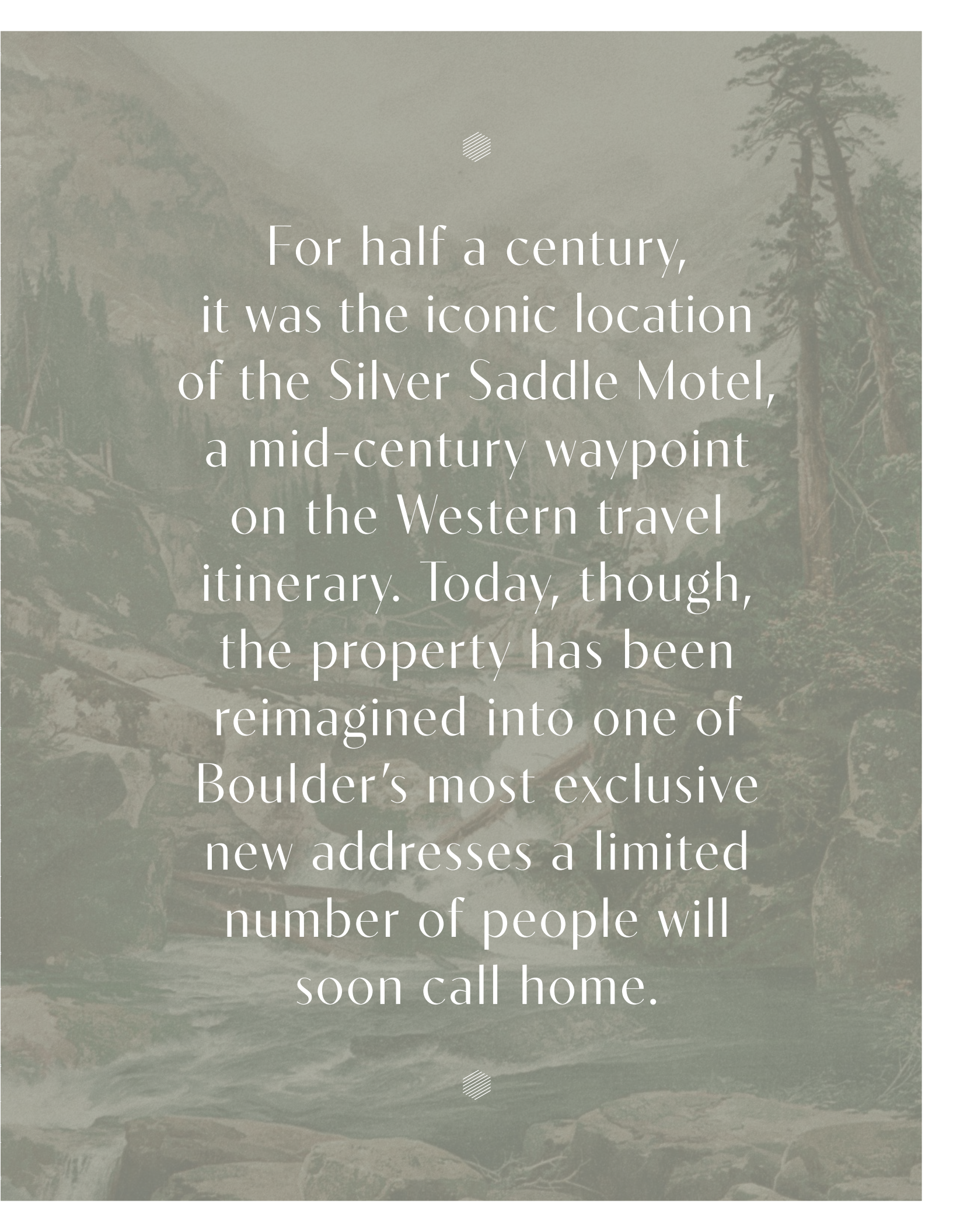






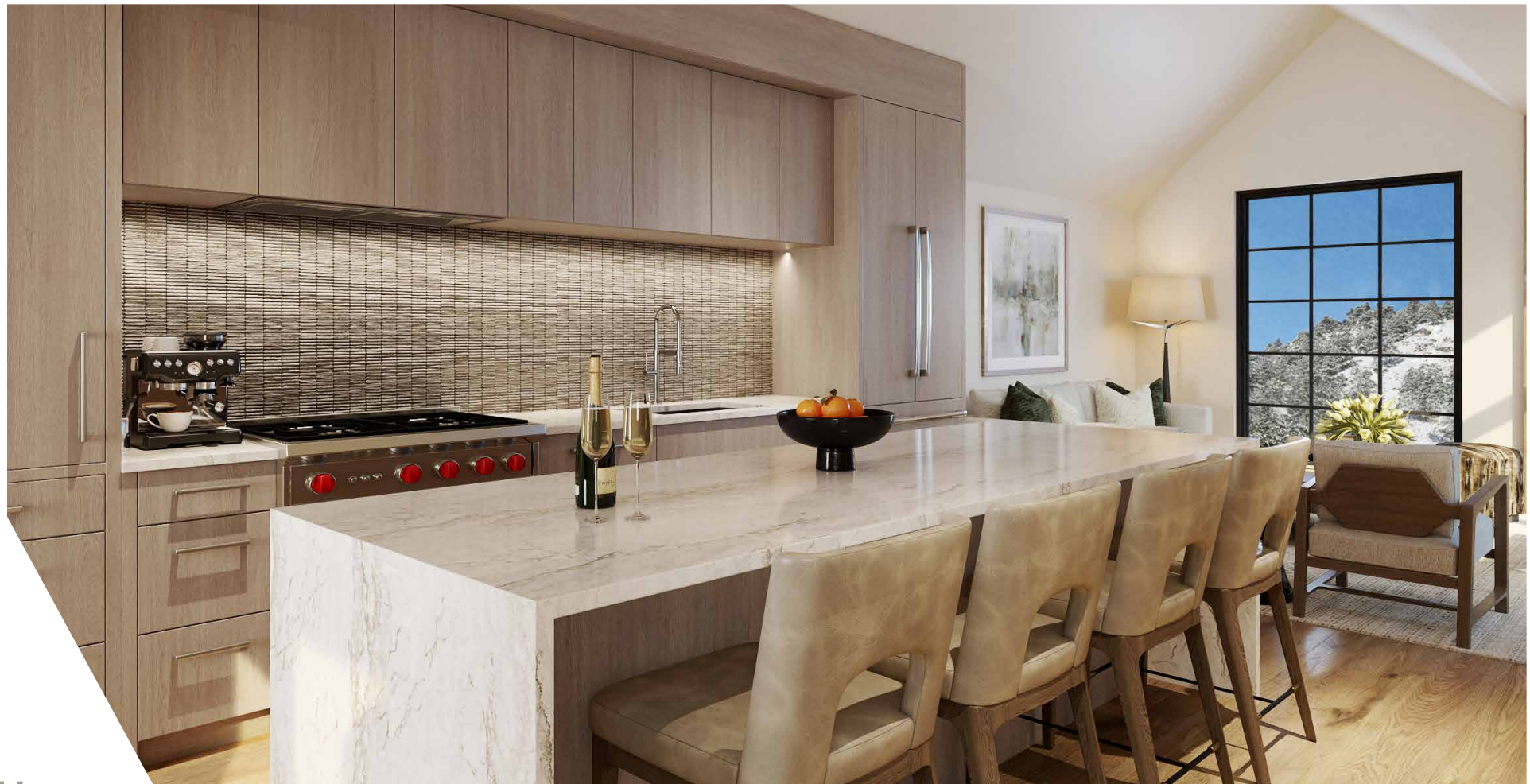
It has been a storied location on the Boulder landscape since early settlers called the creekside solitude at the mouth of the canyon their home. Situated below the iconic flatirons, where granite spires tower overhead, spruce trees cascade down the hillsides, and the acoustic ambiance of Boulder Creek flows directly below.

Boulder Creek c. 1880 >



For half a century, it was the iconic location of the Silver Saddle Motel, a mid-century waypoint on the Western travel itinerary. Today, though, the property has been reimagined into one of Boulder's most exclusive new addresses a limited number of people will soon call home.





A limited collection of luxury homes will soon be available, with design inspired by the topography, and a modern, refreshing take on living the Boulder lifestyle.



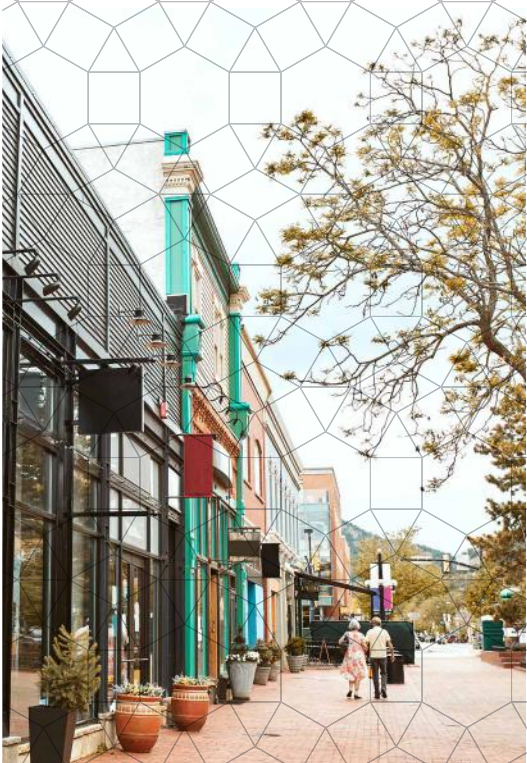




Footsteps from the best of Boulder.  
Yet, miles from the everyday.

Saddle Creek is a refreshing reimagination of life in the heart of downtown Boulder, offering a limited collection of spacious, multi-level residences that feature gracious decks, expansive views, and fresh, contemporary design. Nestled into the hillside at the mouth of Boulder Canyon, mere steps from the Boulder Creek path to downtown, it is truly Boulder's most exceptional new residential address.





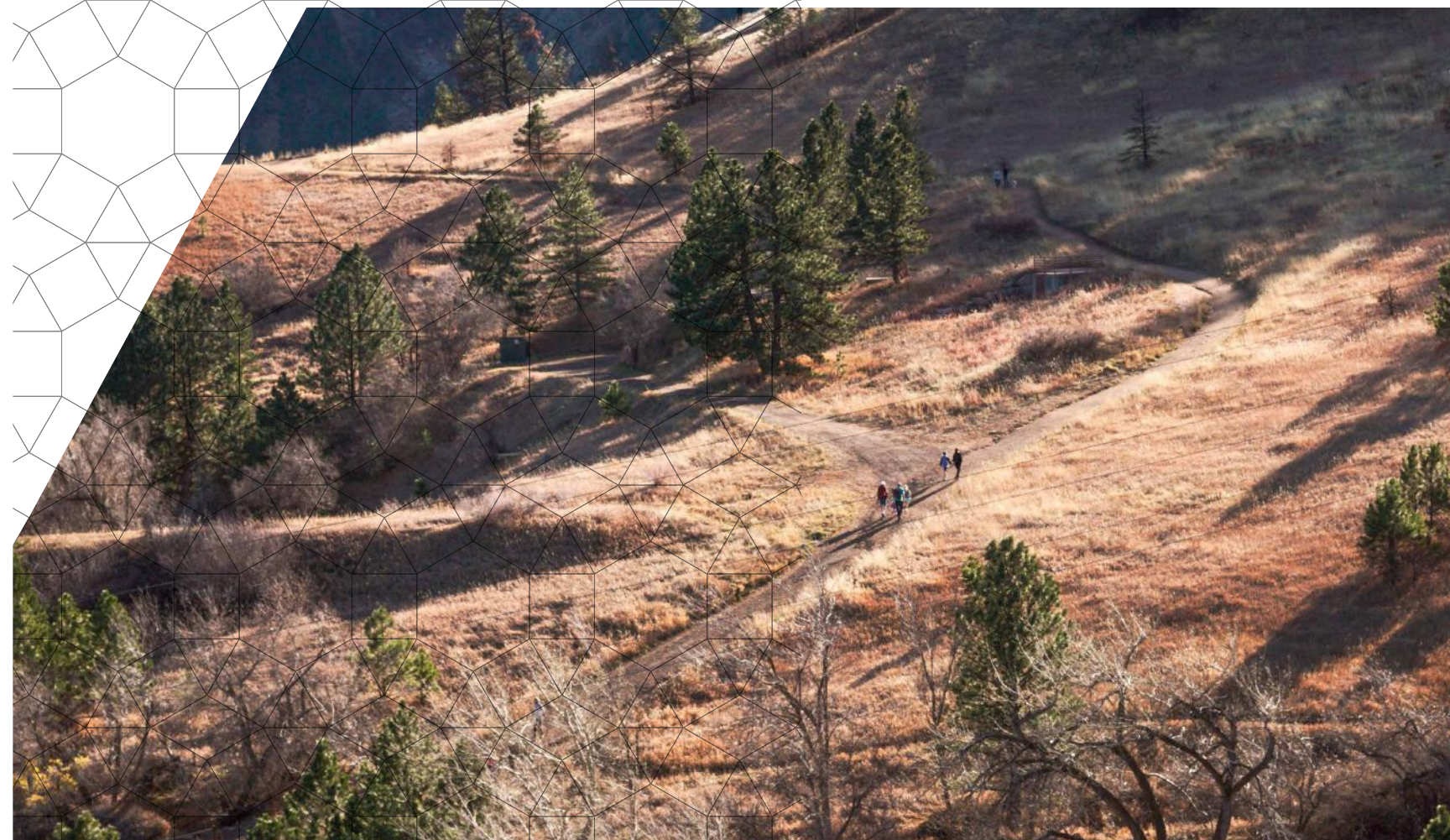
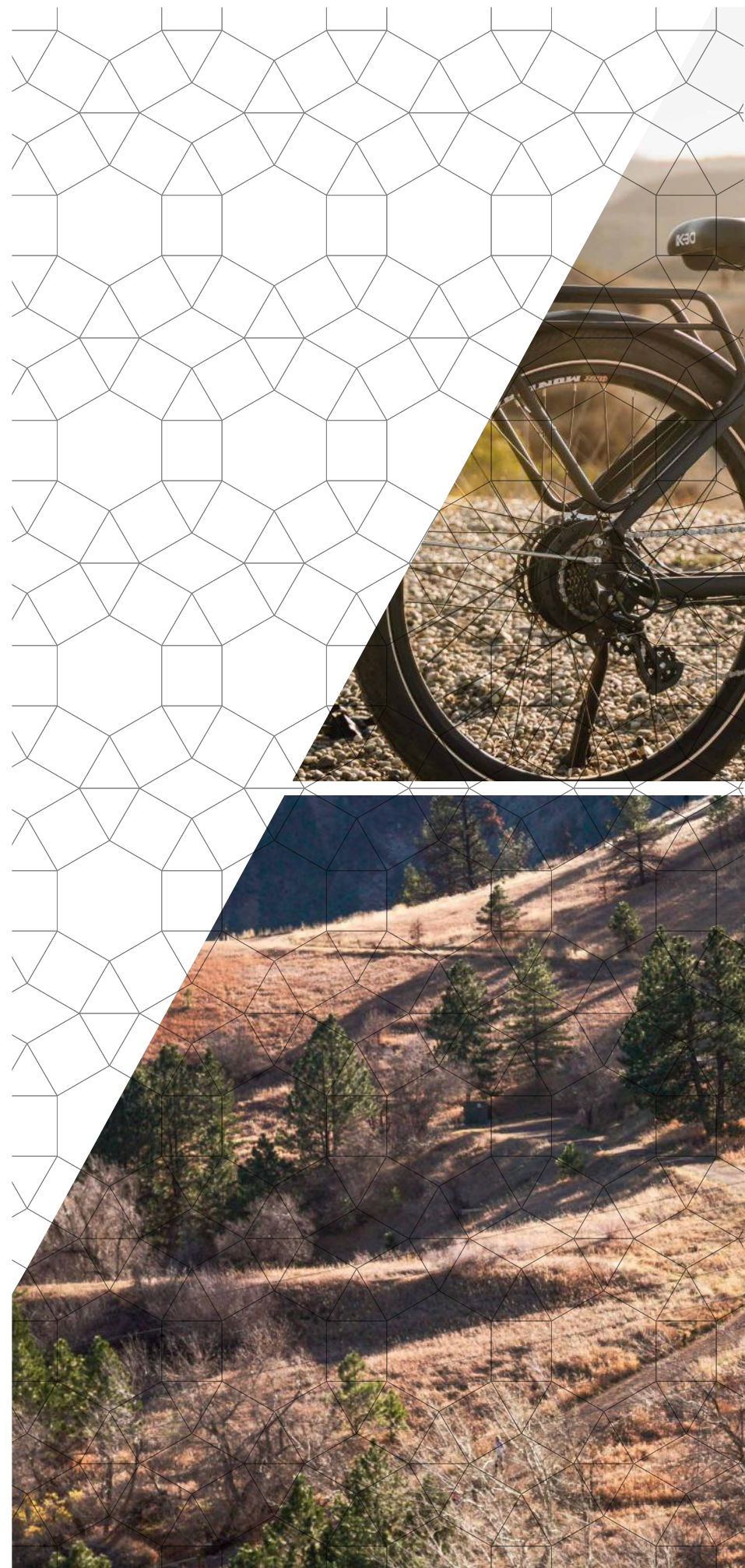
Car free.  
Care free.

It is the very best of Boulder life, completely on your terms.



At Saddle Creek, you are only steps from the Boulder Creek path with roadless access to the Pearl Street Mall to meet friends for a dinner out or to catch a live music show. Saturday morning spent wandering the farmer's market is an easy bike ride away on the electric bikes that are included with each residence. The University of Colorado is close by, where the vibrant campus provides everything from nationally recognized sporting events to the annual Shakespeare Festival. The cultural experiences that await are as endless as the views down the canyon.





## Adventurous Escapes



Tucked into the mouth of the Canyon, Saddle Creek puts you moments away from the breathtaking immersion of the foothills, with easy access to hiking, skiing, fly fishing and all the adventure for which Boulder is famous.

The Flatirons and Boulder County Open Space serve as your backyard, with countless trails available for a morning run or an afterwork hike.

The cherished wilderness area of Indian Peaks is an easy drive up the canyon, for climbing, hiking, fishing and other alpine pursuits, while nearby Eldora Ski Area serves as your easy-to-access snowsports resort.





●

# Your mountain retreat, right in the heart of Boulder.

The luxury residences were designed by multiple, award-winning local architecture teams, bringing design variety and a character anchored in true sense of place. Each residence gracefully flows from floor to floor with generous use of windows, spacious outdoor spaces and thoughtful owner amenities designed for comfortable, low-maintenance living.

The interiors bring together a fresh take on alpine living and mountain character, with optional design finish packages featuring natural substrates and understated, contemporary color palettes born of the landscape that surrounds these special residences.



Design inspired by the surroundings. Location inspired by mother nature.





BUILT-INS



SIMPLICITY



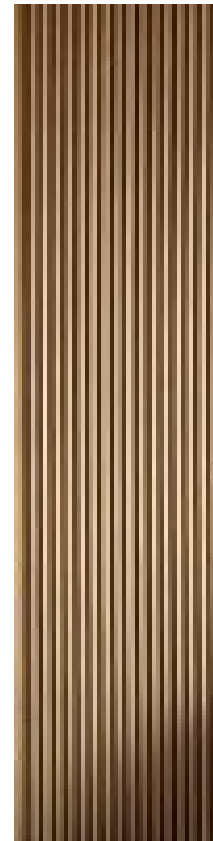
CALMING



LUXURIOUS



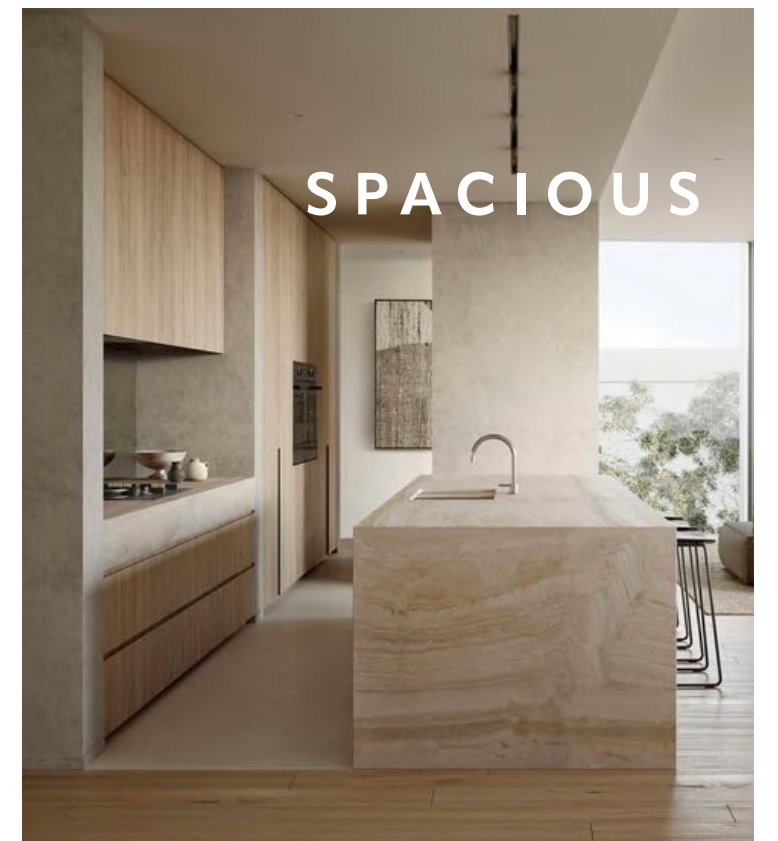
SPA-LIKE



WARMTH



LIFESTYLE



SPACIOUS









ARTIST'S CONCEPTUAL RENDERING; LAYOUT AND DETAILS VARY BY PLAN

# GREAT ROOM





ARTIST'S CONCEPTUAL RENDERING; LAYOUT AND DETAILS VARY BY PLAN

# KITCHEN



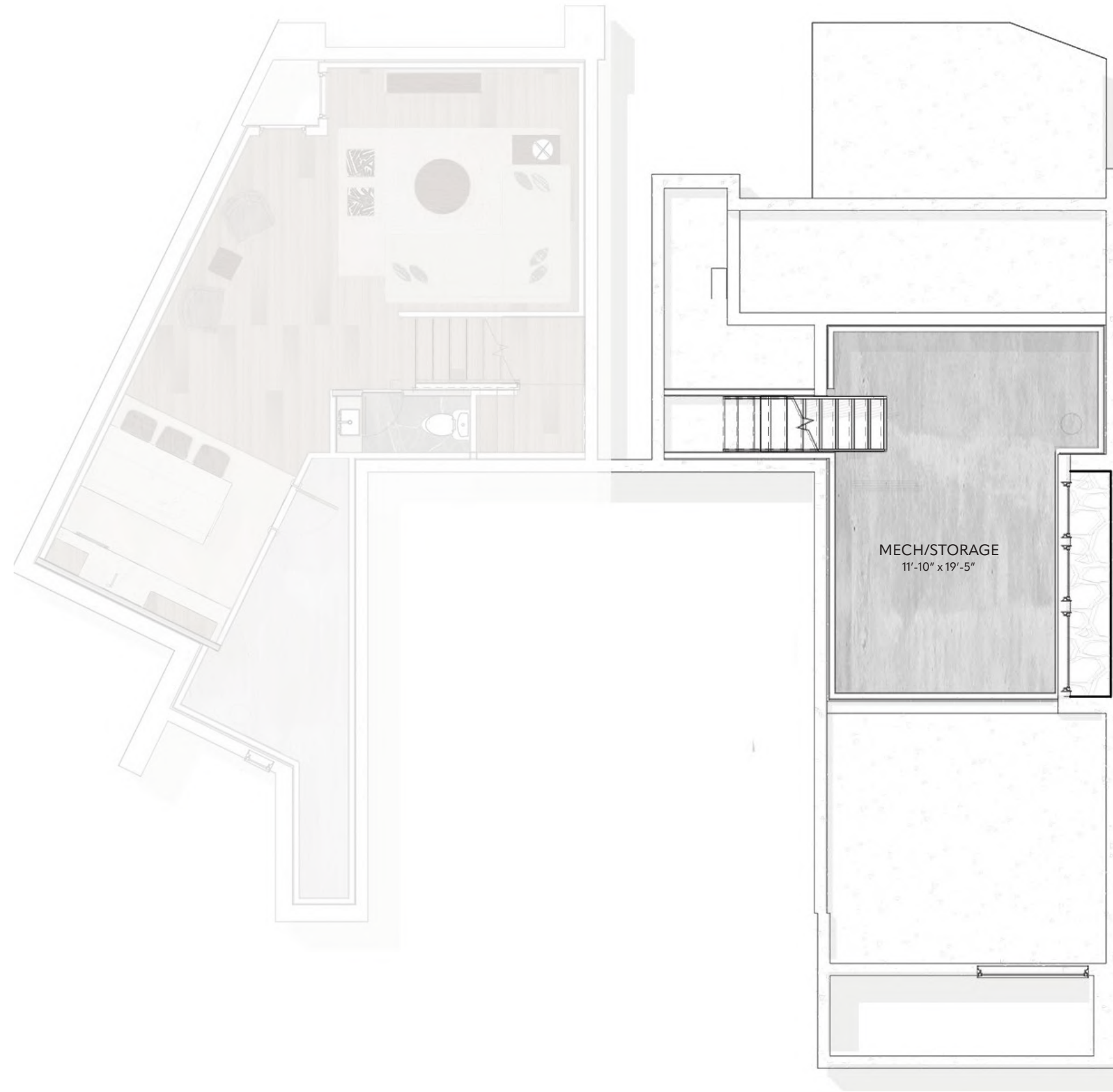




ARTIST'S CONCEPTUAL RENDERING; LAYOUT AND DETAILS VARY BY PLAN

## PRIMARY BATHROOM





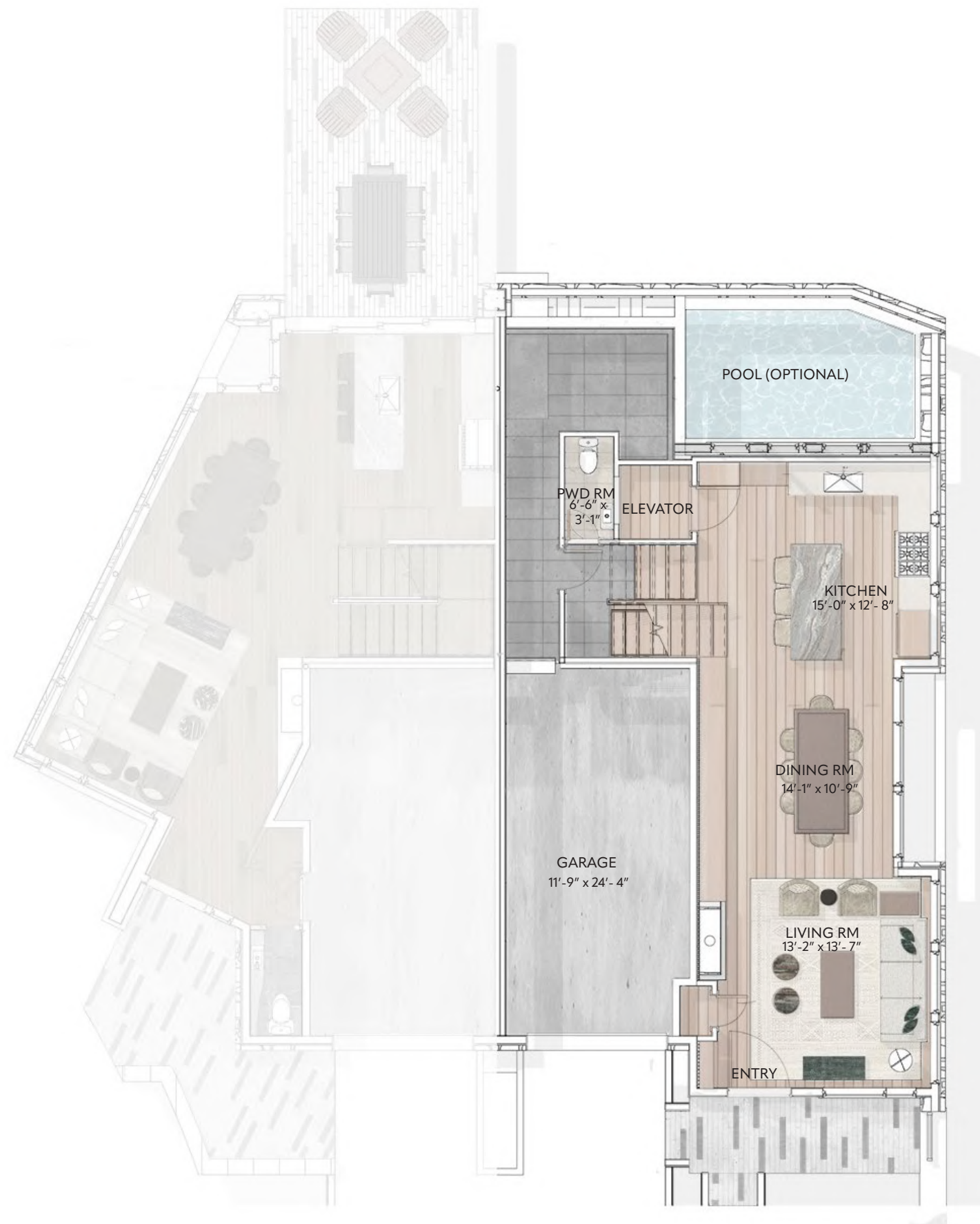
FLOOR PLANS, ELEVATIONS, AND 3D  
VIEWS ARE FOR REFERENCE TO REPRESENT  
FINISHES AND VARY BY PLAN



# LOT K(2) FLOOR PLAN

## LOWER LEVEL





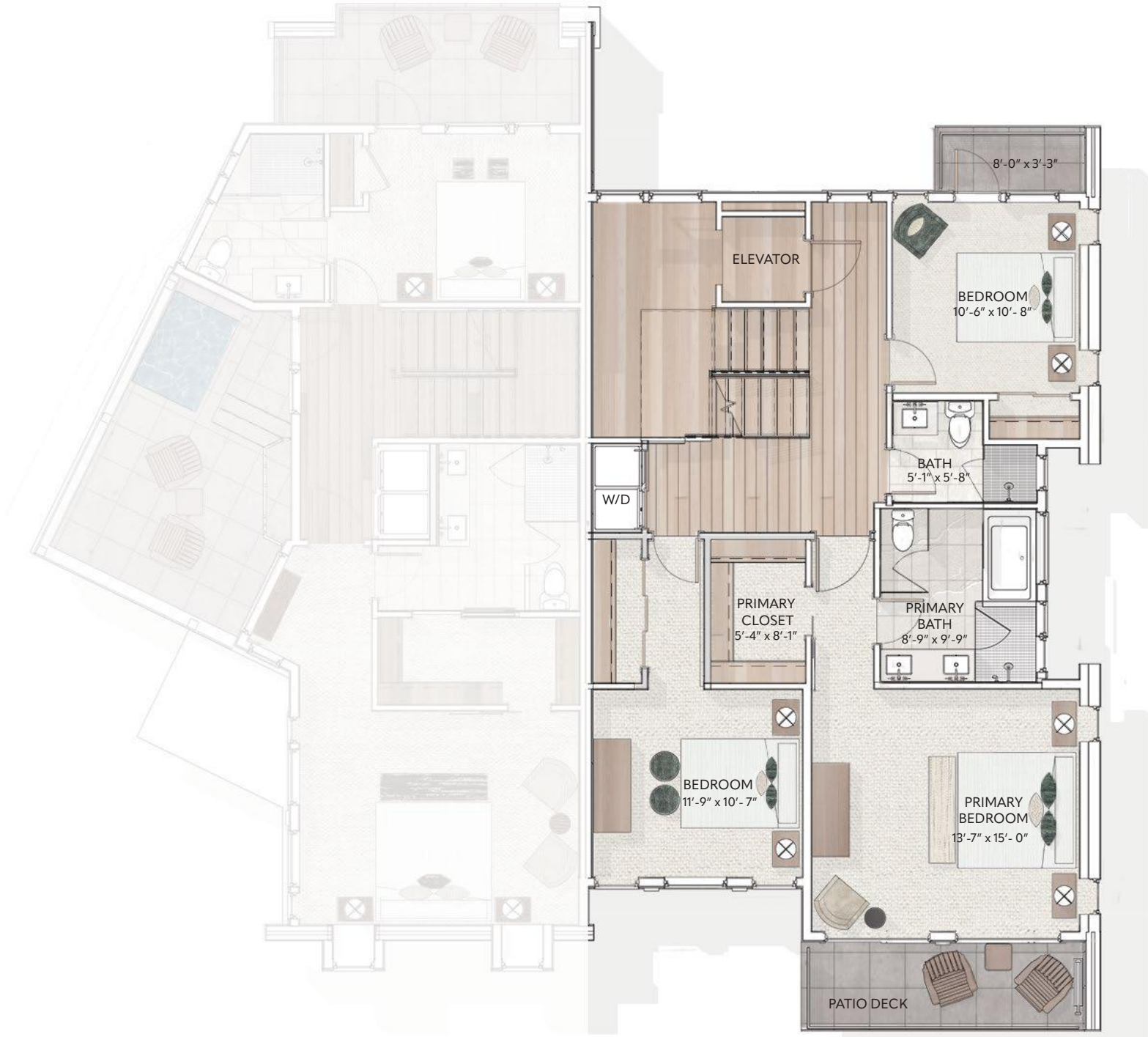
FLOOR PLANS, ELEVATIONS, AND 3D  
VIEWS ARE FOR REFERENCE TO REPRESENT  
FINISHES AND VARY BY PLAN



# LOT K(2) FLOOR PLAN

## GROUND LEVEL





FLOOR PLANS, ELEVATIONS, AND 3D VIEWS ARE FOR REFERENCE TO REPRESENT FINISHES AND VARY BY PLAN

# LOT K(2) FLOOR PLAN LEVEL ONE





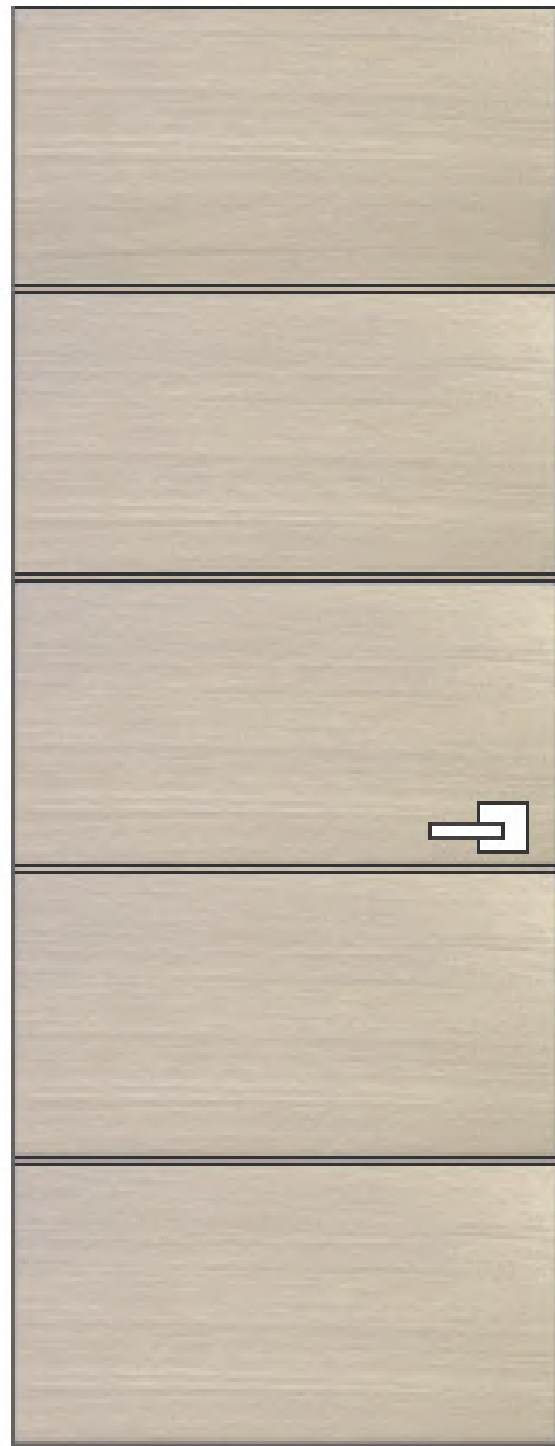


FLOOR PLANS, ELEVATIONS, AND 3D  
VIEWS ARE FOR REFERENCE TO REPRESENT  
FINISHES AND VARY BY PLAN





1



2



3



4



5



6



**INTERIOR DOOR STYLE**

Manufacturer: Trustile  
Style: TMIR5000  
Material: White Oak  
Color: Custom Stained to Coordinate with Wood Flooring  
Size: 7'6"H

1

**WALL PAINT**

Manufacturer: Sherwin Williams  
Color: Pearly White

2

**CEILING PAINT**

Manufacturer: Sherwin Williams  
Color: High Reflective White

3

**INTERIOR DOOR HARDWARE**

Manufacturer: Emtek  
Style: Spencer Lever  
Finish: Satin Nickel  
Size: 5" L Lever  
2 1/2" H x 2 1/2" W Square Rosette

4

**ENTRY HOOK**

Manufacturer: Richelieu  
Style: Contemporary Hook  
Finish: Stainless Steel  
Size: 1 1/4" H x 5/8" W x 1 3/4" Projection

5

**WOOD FLOORING**

Wide plank random length engineered  
European White Rift Oak

6

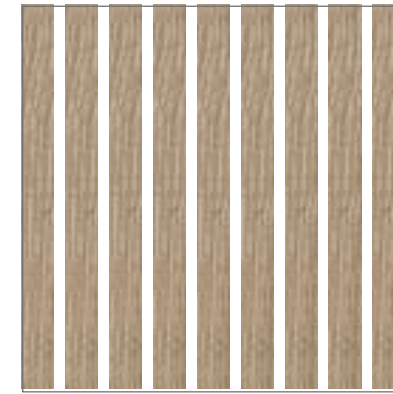




**ELEVATION**

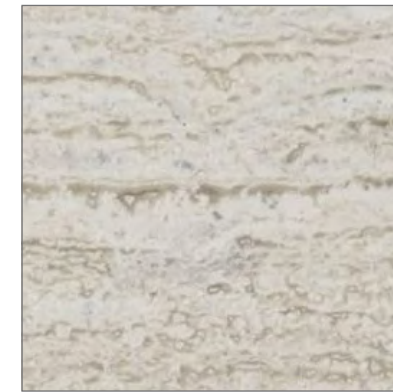


1



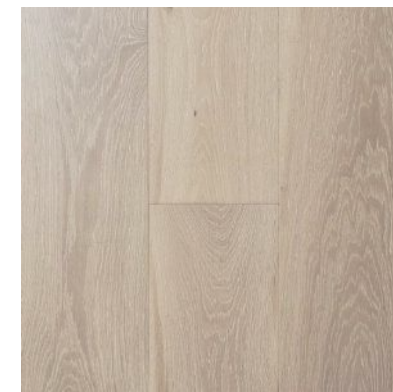
**VERTICAL WOOD PANELING**  
Stained to match wood flooring

2



**FIREPLACE SURROUND TILE**  
Manufacturer: Materials Marketing  
Style: Vintage  
Material: Limestone  
Finish: Vein Cut  
Size: 12" Wx24" L

3



**WOOD FLOORING**  
Wide plank random length engineered  
European White Rift Oak

FLOOR PLANS, ELEVATIONS, AND 3D VIEWS ARE FOR REFERENCE TO REPRESENT FINISHES AND VARY BY PLAN



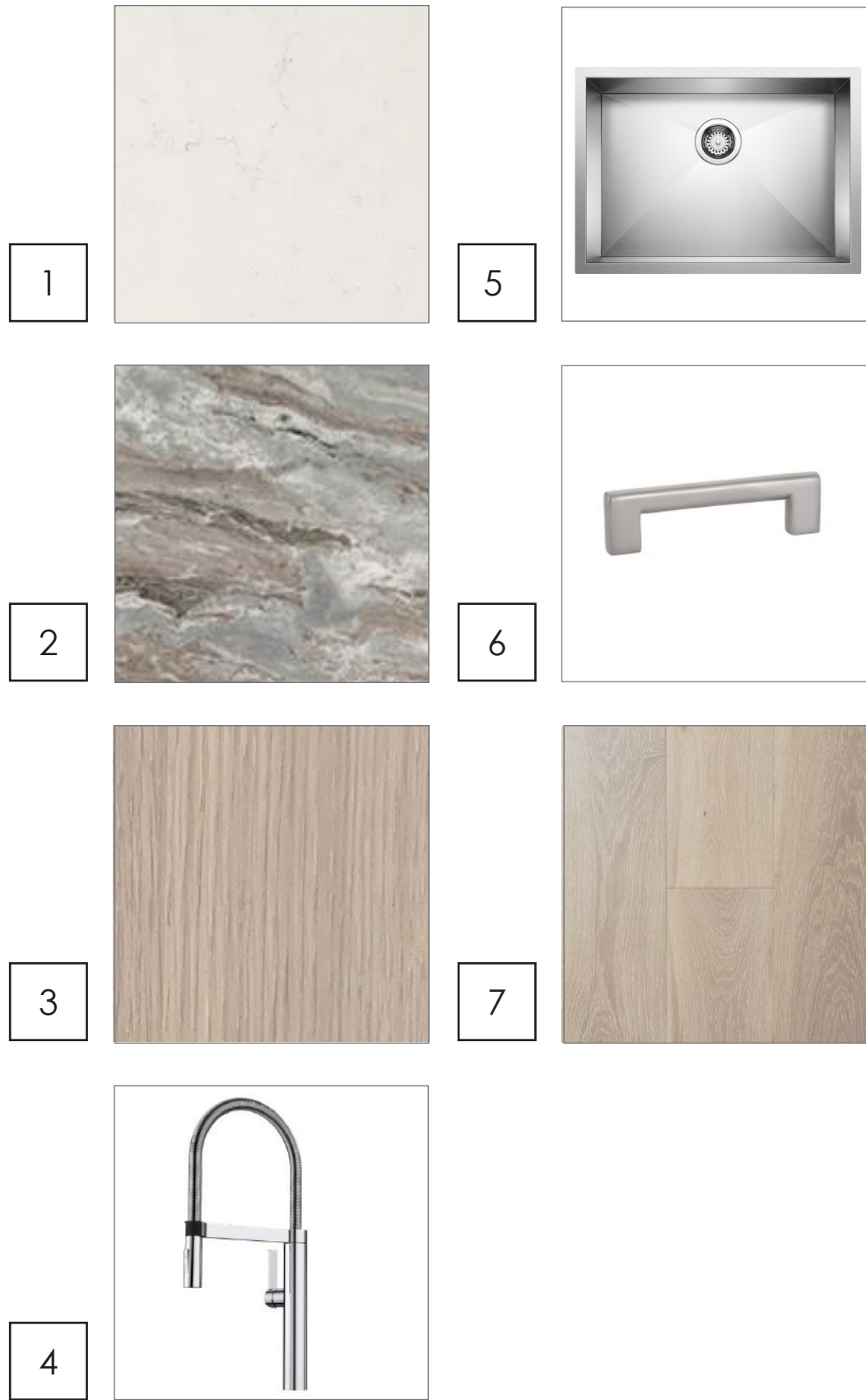
**KEY PLAN**



**3D VIEW**



FLOOR PLANS, ELEVATIONS, AND 3D VIEWS ARE FOR REFERENCE TO REPRESENT FINISHES AND VARY BY PLAN



**PERIMETER & BACKSPLASH SLAB**

1

Manufacturer: Caesarstone  
 Style: Frosty Carrina  
 Material: Quartz  
 Finish: Polished  
 Size: 3 CM Exposed Edge, 2 CM for Backsplash

**ACCENT ISLAND SLAB COUNTERTOP**

2

Manufacturer: Arizona Tile  
 Style: Fantasy Brown Satin  
 Material: Marble  
 Finish: Satin

**SLAB CABINETS & DRAWERS**

3

Style: Slab  
 Material: Rift White Oak  
 Color: Custom Stain to Coordinate with Wood Flooring  
 Finish: Standard

**FAUCET**

4

Manufacturer: Blanco  
 Style: Blancoculina  
 Finish: PVD Steel  
 Size: 21 1/2" x 8 5/8"

**SINK**

5

Manufacturer: Blanco  
 Style: Quatrus R15 28  
 Color: Stainless Steel  
 Size: 28" x 18"

**APPLIANCE/CABINET PULL**

6

Manufacturer: Emtek  
 Style: Trail Pull  
 Finish: Satin Nickel  
 Size: 8" and 10" L

**WOOD FLOORING**

7

Wide plank random length engineered  
 European White Rift Oak





1



4



6

1

**HOOD**

Manufacturer: Bosch  
Style: 500 series pull-out hood  
Size: 30" W  
Finish: Stainless Steel

2

**GAS RANGE**

Manufacturer: Wolf  
Style: 36" Dual Fuel Range 6 Burner  
Size: 36" W  
Finish: Stainless Steel



2

3

**WINE FRIDGE**

Manufacturer: Zephyr  
Style: Panel Ready Dual Zone Wine Cooler  
Size: 23 1/2" W x 29 3/4" H  
Finish: Stainless Steel

4

**MICROWAVE**

Manufacturer: Wolf  
Style: 24" Transitional Drawer Microwave  
Size: 24" W



5

5

**REFRIGERATOR**

Manufacturer: Bosch  
Style: Benchmark Built-In Bottom Freezer Refrigerator  
Size: 30" W  
Panel Ready



3

6

**DISHWASHER**

Manufacturer: Bosch  
Style: 800 Series Dishwasher  
Size: 24" W  
Panel Ready

7

**DOUBLE OVEN**

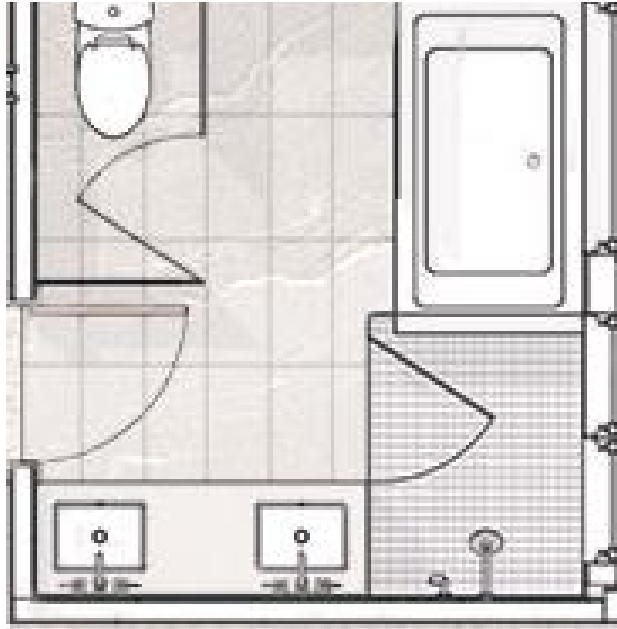
Manufacturer: Wolf  
Style: 30" Transitional Built-In Oven  
Size: 30" W



7



**KEY PLAN K(2)**



**3D VIEW K(2)**



FLOOR PLANS, ELEVATIONS, AND 3D VIEWS ARE FOR REFERENCE TO REPRESENT FINISHES AND VARY BY PLAN

1



4



2



5



3



6



1

**WALL TILE**  
 Manufacturer: Ergon  
 Collection: Stone Talk  
 Style: White Rullata  
 Size: 12" x 24"

2

**VANITY COUNTERTOP, BENCH SEAT & FACE**  
 Manufacturer: Caesarstone  
 Style: Organic White  
 Material: Quartz  
 Finish: Polished  
 Size: 3 CM Exposed Edge

3

**SHOWER NICHE MOSAIC**  
 Manufacturer: Ann Sacks  
 Style: Selvaggio  
 Color: Athens  
 Finish: Honed  
 Size: Varies

4

**FLOOR & BASE TILE**  
 Manufacturer: Ergon  
 Style: Stonetalk White Martellata  
 Material: Porcelain  
 Finish: Naturale  
 Color: White  
 Size: 12" H x 24" L (Floor), 6" H x 24" L (Base)

5

**VANITY LED MIRROR**  
 Manufacturer: Nova  
 Style: Nova LED Lighted Mirror  
 Size: Varies per Vanity

6

**CABINET PULL**  
 Manufacturer: Emtek  
 Style: Trail Pull  
 Finish: Satin Nickel  
 Size: 8" L



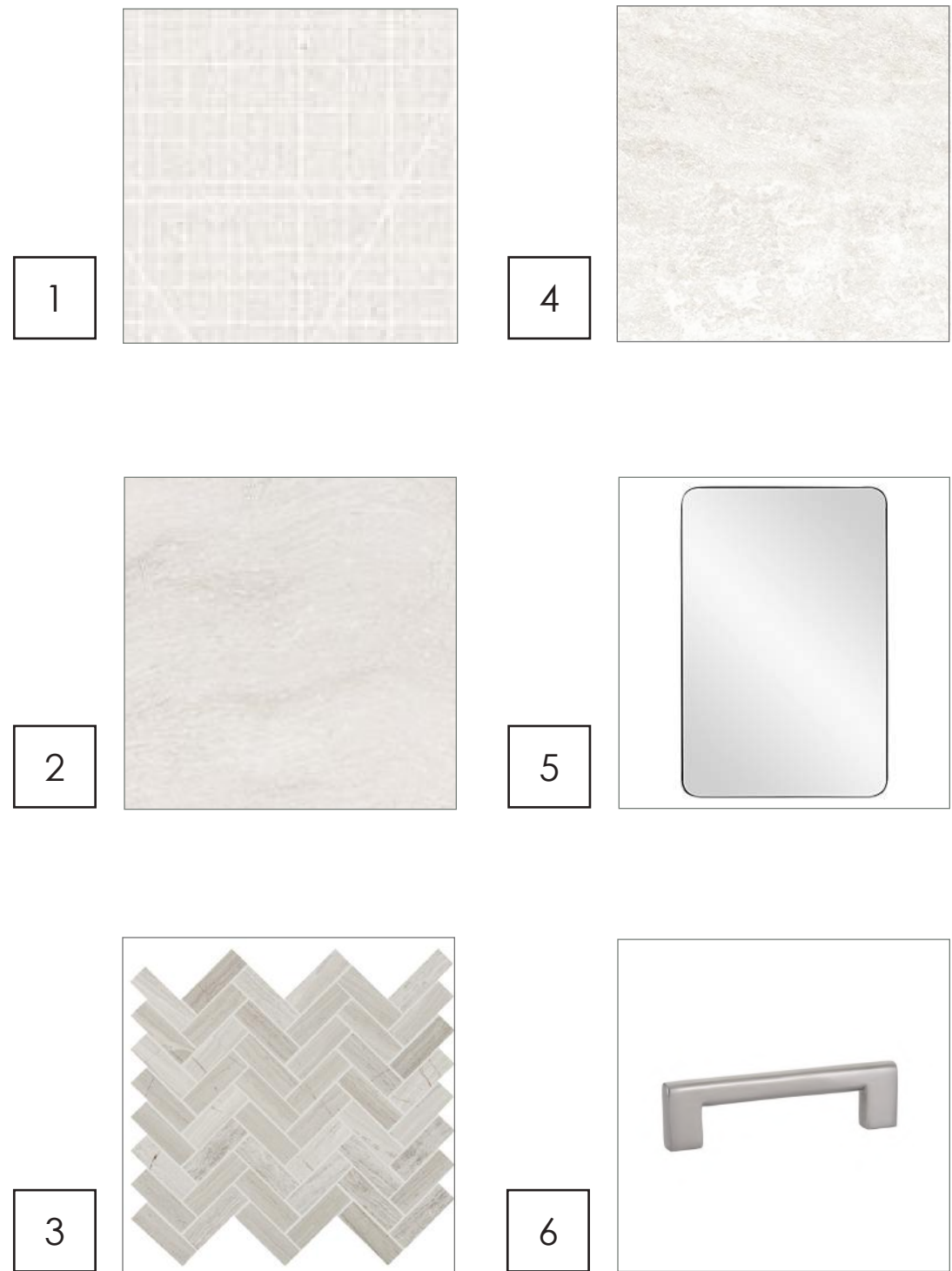
**KEY PLAN K(2)**



**ELEVATION K(2)**



FLOOR PLANS, ELEVATIONS, AND 3D VIEWS ARE FOR REFERENCE TO REPRESENT FINISHES AND VARY BY PLAN



**WALL TILE**

Manufacturer: Ergon  
 Style: Grain Stone  
 Color: White Cage Natural  
 Finish: Textured  
 Size: 12" W x 24" L

**VANITY COUNTERTOP & BACKSPLASH**

Manufacturer: Cambria  
 Style: Delgatie  
 Material: Quartz  
 Finish: Polished  
 Size: 3 CM Exposed Slab, 2 CM Backsplash

**ACCENT WALL MOSAIC**

Manufacturer: Crossville  
 Style: Moongate Herringbone Mosaic  
 Material: Natural Stone  
 Size: 1" W x 3" L

**FLOOR & BASE TILE**

Manufacturer: Ergon  
 Style: Oros Stone  
 Color: Tecnica White Natural  
 Finish: Natural  
 Size: 12" x 24"

**VANITY MIRROR**

Size: Varies per Vanity

**CABINET PULL**

Manufacturer: Emtek  
 Style: Trail Pull  
 Finish: Satin Nickel  
 Size: 8" L



**KEY PLAN K(2)**



**ELEVATION K(2)**

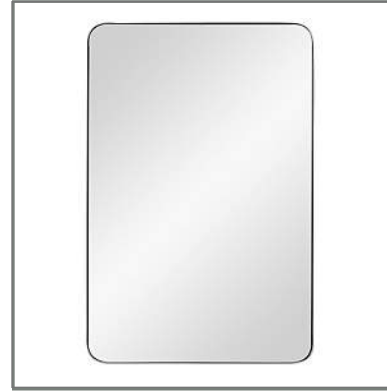


FLOOR PLANS, ELEVATIONS, AND 3D VIEWS ARE FOR REFERENCE TO REPRESENT FINISHES AND VARY BY PLAN

1



4



1

**WALL COVERING**  
Manufacturer: Studio Source  
Style: Draw The Line  
Color: Taupe  
Size: 27" x 27"

2

**VANITY COUNTERTOP**  
Manufacturer: Arizona Tile  
Style: White Truffle  
Material: Marble  
Finish: Polished  
Size: 3 CM Exposed Edge, 2 CM Backsplash

2



5



3

**FLOOR & BASE TILE**  
Manufacturer: Stones & More  
Style: Zecevo  
Material: Matte  
Finish: Naturale  
SIZE: 16" W x 32" L (Floor), Cut to 6" W x 32" L (Base)

4

**VANITY MIRROR**  
Size: Varies per Vanity

3



5

**CABINET PULL**  
Manufacturer: Emtek  
Style: Trail Pull  
Finish: Satin Nickel  
Size: 8"L







OPEN VIEWS



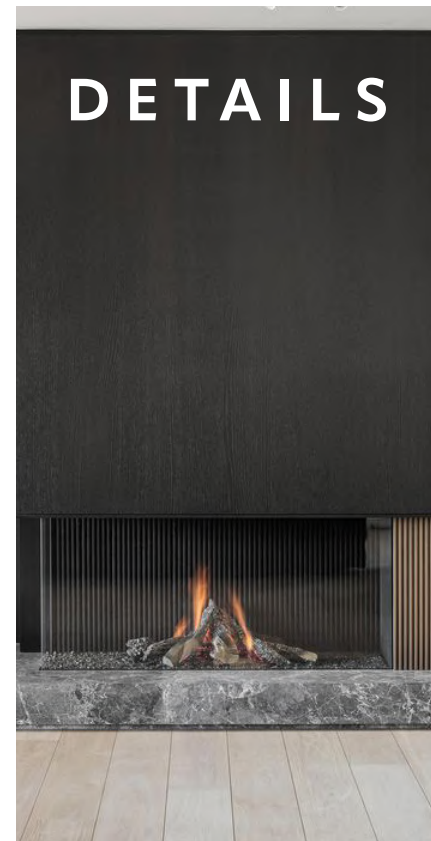
RICHNESS



SIMPLICITY



LIFESTYLE



DETAILS











ARTIST'S CONCEPTUAL RENDERING; LAYOUT AND DETAILS VARY BY PLAN

# GREAT ROOM





ARTIST'S CONCEPTUAL RENDERING; LAYOUT AND DETAILS VARY BY PLAN



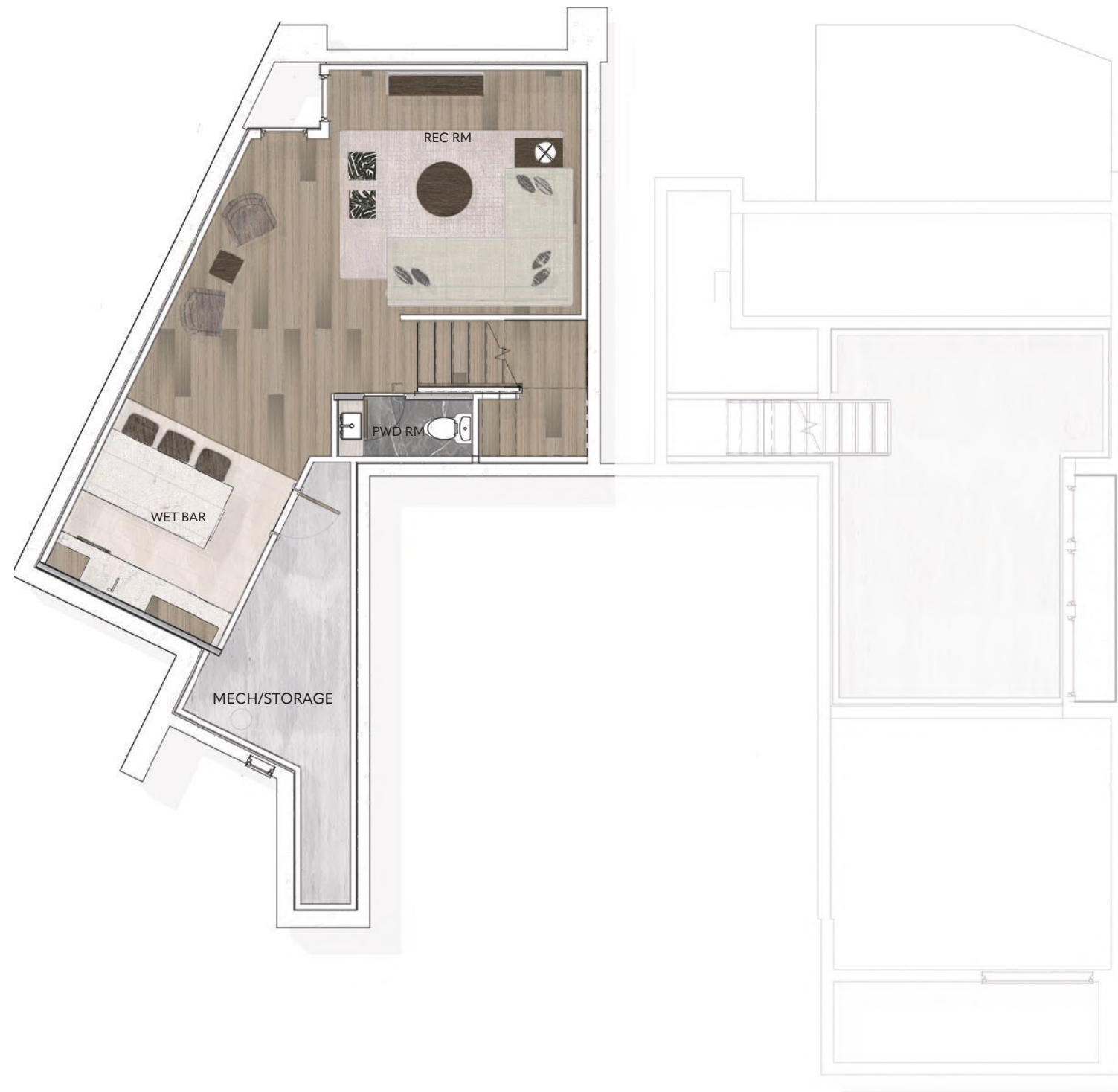


ARTIST'S CONCEPTUAL RENDERING; LAYOUT AND DETAILS VARY BY PLAN

## PRIMARY BATHROOM







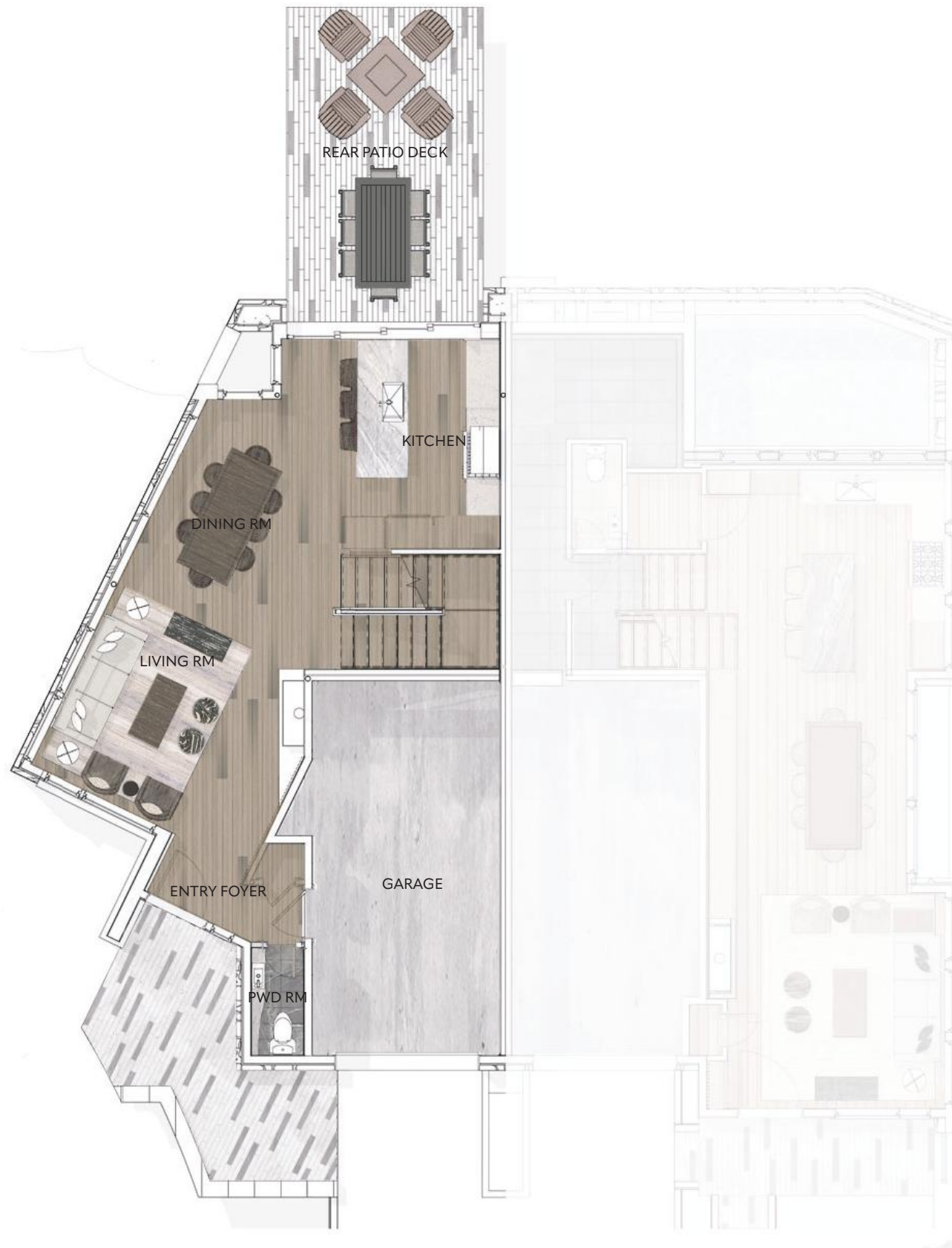
FLOOR PLANS, ELEVATIONS, AND 3D  
VIEWS ARE FOR REFERENCE TO REPRESENT  
FINISHES AND VARY BY PLAN



# LOT K(1) FLOOR PLAN

## LOWER LEVEL





FLOOR PLANS, ELEVATIONS, AND 3D  
VIEWS ARE FOR REFERENCE TO REPRESENT  
FINISHES AND VARY BY PLAN



# LOT K(1) FLOOR PLAN

## GROUND LEVEL





FLOOR PLANS, ELEVATIONS, AND 3D  
VIEWS ARE FOR REFERENCE TO REPRESENT  
FINISHES AND VARY BY PLAN



# LOT K(1) FLOOR PLAN LEVEL ONE





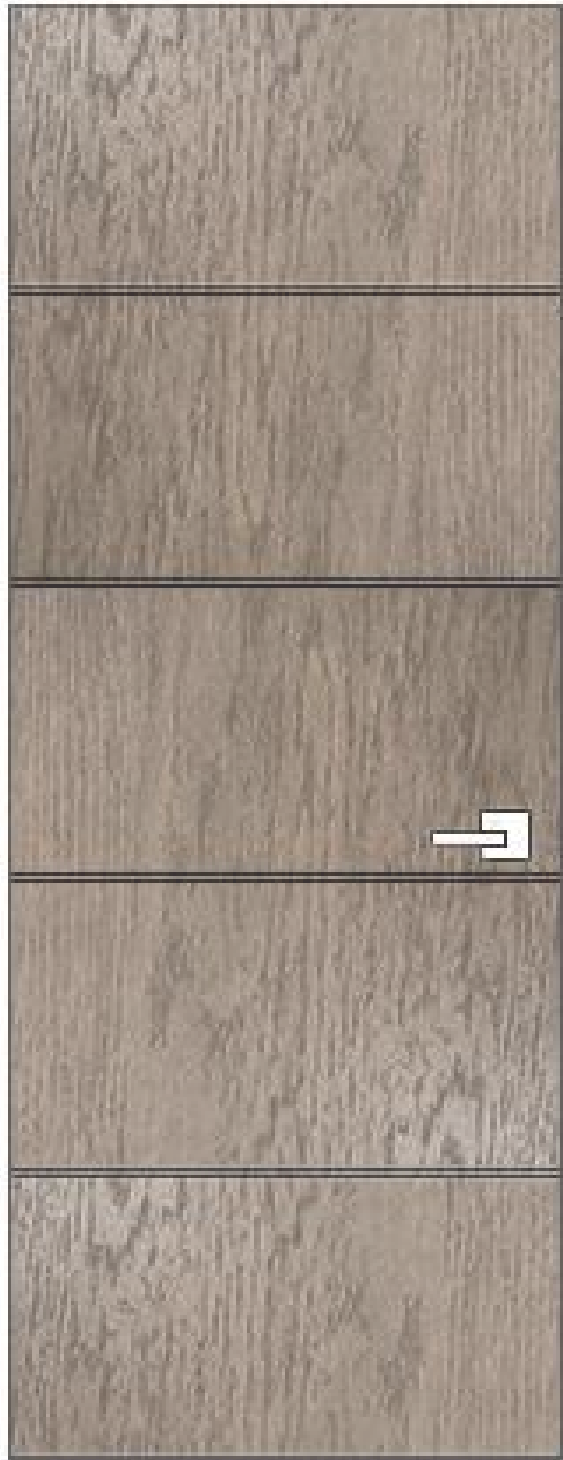
FLOOR PLANS, ELEVATIONS, AND 3D  
VIEWS ARE FOR REFERENCE TO REPRESENT  
FINISHES AND VARY BY PLAN



# LOT K(1) FLOOR PLAN LEVEL TWO



1



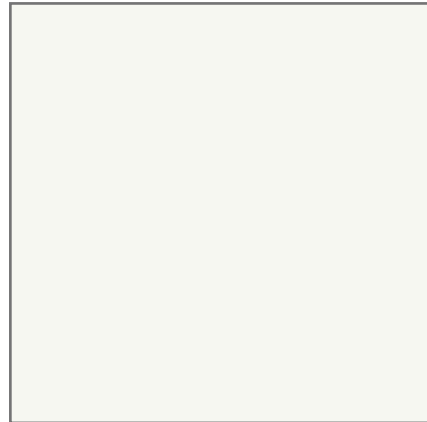
2



5



3



6



4



1

**INTERIOR DOOR STYLE**

Manufacturer: Trustile  
Style: TMIR5000  
Material: White Oak  
Color: Custom Stained to Coordinate with Wood Flooring  
Size: 7'6"H

2

**WALL PAINT**

Manufacturer: Sherwin Williams  
Color: Pearly White

3

**CEILING PAINT**

Manufacturer: Sherwin Williams  
Color: High Reflective White

4

**INTERIOR DOOR HARDWARE**

Manufacturer: Emtek  
Style: Spencer Lever  
Finish: Satin Nickel  
Size: 5" L Lever  
2 1/2" H x 2 1/2" W Square Rosette

5

**ENTRY HOOK**

Manufacturer: Richelieu  
Style: Contemporary Hook  
Finish: Stainless Steel  
Size: 11/4" H x 5/8" W x 13/4" Projection

6

**WOOD FLOORING**

Wide plank random length engineered  
European White Rift Oak

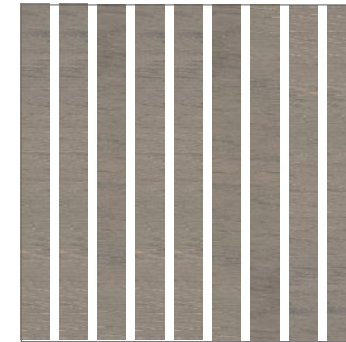


ELEVATION K(1)



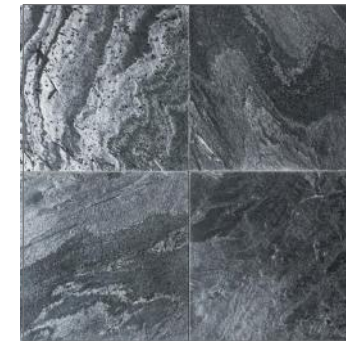
FLOOR PLANS, ELEVATIONS, AND 3D VIEWS ARE FOR REFERENCE TO REPRESENT FINISHES AND VARY BY PLAN

1



**VERTICAL WOOD PANELING**

2



**FIREPLACE SURROUND TILE**

Manufacturer: Decorative Materials  
Style: Ostrich Gray Slate Tile  
Material: Slate  
Finish: Vein Cut  
Size: 16" x 16" x 5/8"

3



**WOOD FLOORING**

Wide plank random length engineered  
European White Rift Oak

4

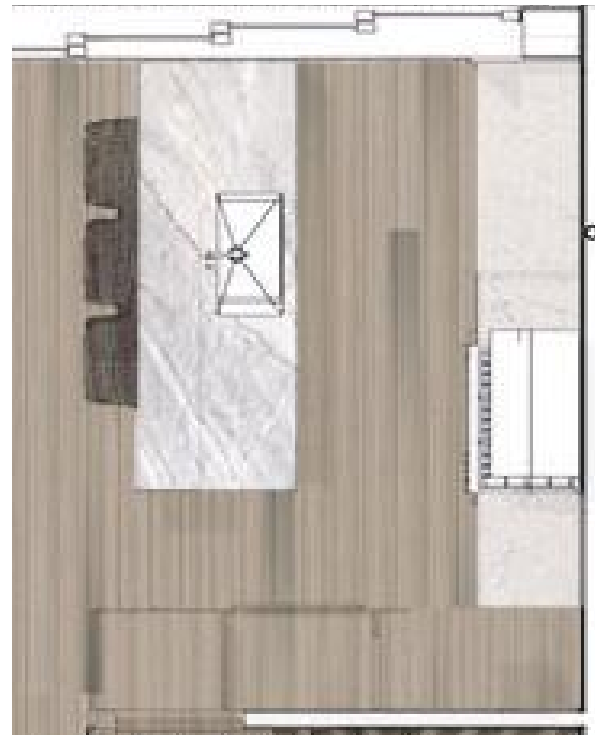


**HEARTH ACCENT SLAB**

Manufacturer: Arizona Tile  
Style: Beverly Blue  
Material: Marble  
Finish: Polished



**KEY PLAN K(1)**



**3D VIEW K(1)**



FLOOR PLANS, ELEVATIONS, AND 3D VIEWS ARE FOR REFERENCE TO REPRESENT FINISHES AND VARY BY PLAN

1



5



2



6



3



7



4



1

**PERIMETER & BACKSPLASH SLAB**  
 Manufacturer: Caesarstone  
 Style: Bianco Drift  
 Material: Quartz  
 Finish: Polished  
 Size: 3 CM Exposed Edge, 2 CM for Backsplash

2

**ACCENT ISLAND SLAB COUNTERTOP**  
 Manufacturer: Arizona Tile  
 Style: Beverly Blue  
 Material: Marble  
 Finish: Polished

3

**SLAB CABINETS & DRAWERS**  
 Style: Slab  
 Material: Rift White Oak  
 Color: Custom Stain to Coordinate with Wood Flooring  
 Finish: Standard

4

**FAUCET**  
 Manufacturer: Blanco  
 Style: Blancoculina  
 Finish: PVD Steel  
 Size: 21 1/2" x 8 5/8"

5

**SINK**  
 Manufacturer: Blanco  
 Style: Quatrus R15 28  
 Color: Stainless Steel  
 Size: 28" x 18"

6

**APPLIANCE/CABINET PULL**  
 Manufacturer: Emtek  
 Style: Trail Pull  
 Finish: Satin Nickel  
 Size: 8" and 10"L

7

**WOOD FLOORING**  
 Wide plank random length engineered  
 European White Rift Oak





1



4



6

1

**HOOD**

Manufacturer: Bosch  
Style: 500 series pull-out hood  
Size: 30" W  
Finish: Stainless Steel

2

**GAS RANGE**

Manufacturer: Wolf  
Style: 36" Dual Fuel Range 6 Burner  
Size: 36" W  
Finish: Stainless Steel

3

**WINE FRIDGE**

Manufacturer: Zephyr  
Style: Panel Ready Dual Zone Wine Cooler  
Size: 23 1/2" W x 29 3/4" H  
Finish: Stainless Steel



2



5

4

**MICROWAVE**

Manufacturer: Wolf  
Style: 24" Transitional Drawer Microwave  
Size: 24" W

5

**REFRIGERATOR**

Manufacturer: Bosch  
Style: Benchmark Built-In Bottom Freezer Refrigerator  
Size: 30" W  
Panel Ready

6

**DISHWASHER**

Manufacturer: Bosch  
Style: 800 Series Dishwasher  
Size: 24" W  
Panel Ready



3



7

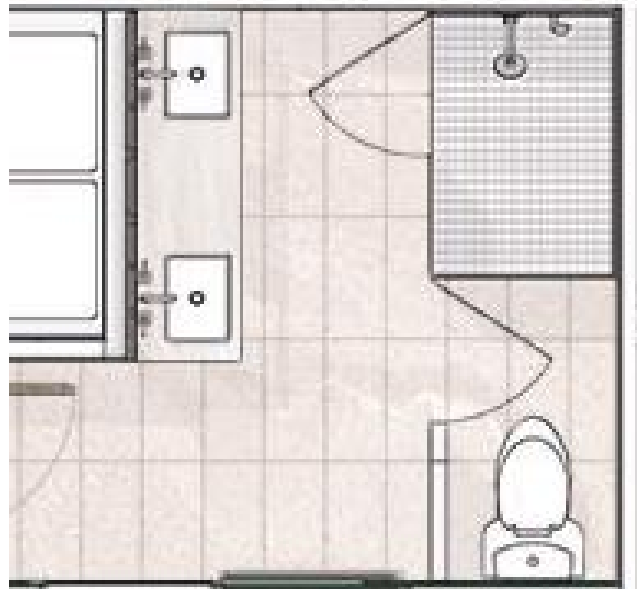
7

**DOUBLE OVEN**

Manufacturer: Wolf  
Style: 30" Transitional Built-In Oven  
Size: 30" W



**KEY PLAN K(1)**



**3D VIEW K(1)**



FLOOR PLANS, ELEVATIONS, AND 3D VIEWS ARE FOR REFERENCE TO REPRESENT FINISHES AND VARY BY PLAN

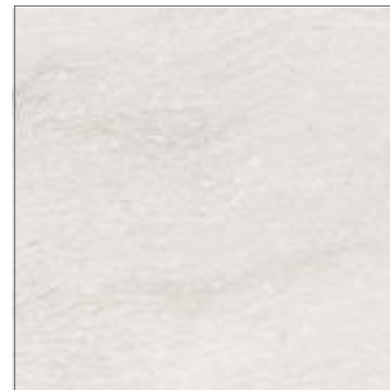
1



4



2



5



3



6



**WALL TILE**

1  
 Manufacturer: Ergon  
 Collection: Stonehenge  
 Style: Ivory Line  
 Size: 12" x 24"

**VANITY COUNTERTOP, BENCH SEAT & FACE**

2  
 Manufacturer: Cambria  
 Style: Ironsbridge  
 Material: Marble  
 Finish: Polished  
 Size: 3 CM Exposed Edge

**SHOWER NICHE MOSAIC**

3  
 Manufacturer: Porcelanosa  
 Style: Lines Safary Brown  
 Finish: Honed  
 Size: 12" x 12"

**FLOOR & BASE TILE**

4  
 Manufacturer: Ergon  
 Style: Stonehenge Ivory  
 Material: Porcelain  
 Finish: Naturale  
 Size: 12" H x 24" L (Floor), 6" H x 24" L (Base)

**VANITY LED MIRROR**

5  
 Manufacturer: Nova  
 Style: Nova LED Lighted Mirror  
 Size: Varies per Vanity

**CABINET PULL**

6  
 Manufacturer: Emtek  
 Style: Trail Pull  
 Finish: Satin Nickel  
 Size: 8" L



**KEY PLAN K(1)**



**ELEVATION K(1)**



FLOOR PLANS, ELEVATIONS, AND 3D VIEWS ARE FOR REFERENCE TO REPRESENT FINISHES AND VARY BY PLAN

1



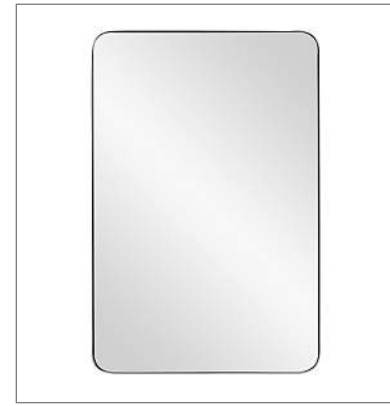
4



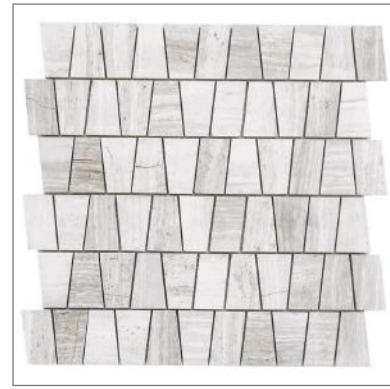
2



5



3



6



**WALL TILE**

Manufacturer: Ergon  
 Style: Grain Stone  
 Color: Sand Cage Natural  
 Finish: Textured  
 Size: 12" W x 24" L

**VANITY COUNTERTOP & BACKSPLASH**

Manufacturer: Caesarstone  
 Style: Misty Carrera  
 Material: Quartz  
 Finish: Polished  
 Size: 3 CM Exposed Slab, 2 CM Backsplash

**SHOWER FLOOR & NICHE MOSAIC**

Manufacturer: Nemo Tile  
 Style: Ruscello Stone  
 Color: Hasia Cuneo Mosaic  
 Size: 12" x 12"

**FLOOR & BASE TILE**

Manufacturer: Ergon  
 Style: Stone Talk  
 Color: Sand Martellata  
 Finish: Natural  
 Size: 12" x 24" (Floor), 6" x 24" (Base)

**VANITY MIRROR**

Size: Varies per Vanity

**CABINET PULL**

Manufacturer: Emtek  
 Style: Trail Pull  
 Finish: Satin Nickel  
 Size: 8" L



**KEY PLAN K(1)**



**ELEVATION K(1)**

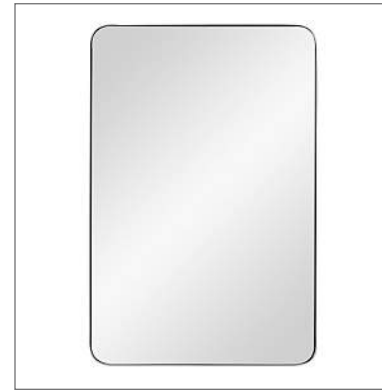


FLOOR PLANS, ELEVATIONS, AND 3D VIEWS ARE FOR REFERENCE TO REPRESENT FINISHES AND VARY BY PLAN

1



4



2



5



3



1

**WALL COVERING**  
 Manufacturer: Studio Source  
 Style: Draw The Line  
 Color: Mineral  
 Size: 27" x 27"

2

**VANITY COUNTERTOP**  
 Manufacturer: Arizona Tile  
 Style: Aravalli  
 Material: Quartzite  
 Finish: Polished  
 Size: 3 CM Exposed Edge, 2 CM Backsplash

3

**FLOOR & BASE TILE**  
 Manufacturer: Stones & More  
 Style: Calcatta Black  
 Material: Matte  
 Finish: Naturale  
 SIZE: 16" W x 32" L (Floor), Cut to 6" W x 32" L (Base)

4

**VANITY LED MIRROR**  
 Manufacturer: Nova  
 Style: LED Lighted Mirror  
 Size: Varies per Vanity

5

**CABINET PULL**  
 Manufacturer: Emtek  
 Style: Trail Pull  
 Finish: Satin Nickel  
 Size: 8"L





1



2



3



4



5

**FAUCET**

Manufacturer: Waterworks  
Style: Formwork Gooseneck Three Hole Deck Mounted Lavatory  
Faucet with Metal Lever Handles  
Finish: Chrome

1

**UNDERMOUNT SINK**

Manufacturer: Kohler  
Style: Verticyl Undermount Sink  
Color: White

2

**SHOWER HEAD**

Manufacturer: Waterworks  
Style: Universal Rain Shower Head  
Finish: Chrome

3

**HAND SHOWER**

Manufacturer: Waterworks  
Style: Ludlow Handshower on Hook with Metal Handle  
Color: Chrome

4

**SHOWERHEAD & HANDSHOWER CONTROL VALVE**

Manufacturer: Waterworks  
Style: Formwork Two Way Diverter Valve Trim for Thermostatic  
System with Metal Lever Handle  
Finish: Chrome

5





6



9



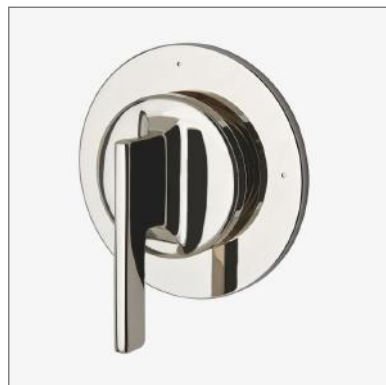
6

**SHOWERHEAD CONTROL VALVE**  
Manufacturer: Waterworks  
Style: Formwork Pressure Balance with Diverter Trim with Metal Lever Handle  
Finish: Chrome

7

**TUB & SHOWER CONTROL VALVE**  
Manufacturer: Waterworks  
Style: Formwork Two Way Diverter Valve Trim for Pressure Balance System with Metal Lever Handle  
Finish: Chrome

7



10



8

**TUB SPOUT**  
Manufacturer: Waterworks  
Style: Ludlow Wall Mounted Tub Spout  
Finish: Chrome

9

**BATH TUB**  
Manufacturer: Duravit  
Style: Architec Bath tub with Panel Height 20 1/2"  
Color: White

8



10

**TOILET**  
Manufacturer: Toto  
Style: Aquia IV 1G Close Coupled Toilet  
Color: Cotton











1



2

**WASHER**

Manufacturer: Whirlpool  
Style: Front Load Washer with Load & Go Dispenser  
Size: 31 9/16"D x 38 5/8"H x 27"W  
\*Typically Stacked

1

**DRYER**

Manufacturer: Whirlpool  
Style: Electric Dryer with Intuitive Touch Controls  
Size: 31"D x 38 3/4"H x 27"W  
\*Typically Stacked

2







ARTIST'S CONCEPTUAL RENDERING; LAYOUT AND DETAILS VARY BY PLAN





BIKE PATH

CANYON BLVD.

BOULDER CREEK

BIKE PATH

O

P

PLACER LANE (PRIVATE)

SADDLE CREEK PLACE (private)

K

J

SADDLE CREEK

SILVER SADDLE LOOP (PRIVATE)

REMINGTON LANE (PRIVATE)

ARAPAHOE AVE



SEPTEMBER SCHOOL

TAYLOR LANE (PRIVATE)

TAYLOR COURT (PRIVATE)



# SADDLE CREEK

## • BOULDER •

[SaddleCreekBoulder.com](http://SaddleCreekBoulder.com)





BOULDER'S  
MOST  
EXCLUSIVE  
NEW  
ADDRESS



SADDLE  
CREEK  
• BOULDER •

We invite you  
to inquire about  
our limited number  
of ownership  
opportunities by  
contacting our  
sales team:

Daphne Queen:  
303-589-4308  
Daphne@8z.com

Angela Moss:  
303-775-5295  
Angela@8z.com

8z REAL ESTATE